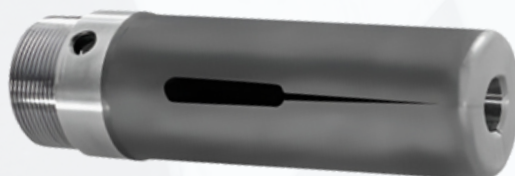
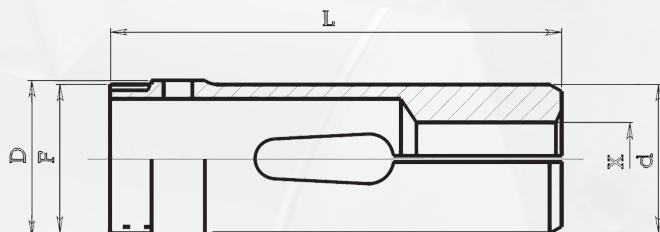




## Pinzas de avance para torno multihusillo



Modelo		Dimensiones (mm)				Agujero máximo (mm)		
Nº Art.	Ref. Din	D	d	L	Rosca F	Ø	Hex.	Cuad.
12220	9259 E	19.5	17.5	82	17x1	12	10	8
12222	9268 E	20	22	86	20x1	16	14	11
12225	9258 E	25	25	90	24x1	20	17	14
12230	9288 E	30	30.5	90	28.5x0.75	25	22	17
12231		30.5	31.4	108	29.5x0.75	26	22	18
12233	9287 E	33	32.5	140	30x1 Izq.	25	21	17
12238		38.5	37.5	140	36x1	32	28	23
12240	9336 E	39.8	41.2	136	38x1.5 Izq.	32	28	23
12241		41	41.2	136	38x1.5	32	28	23
12242	9335 E	41	41.2	136	39x1 Izq.	35	31	25
12243	9335 E	41	41.2	136	39x1	35	31	25
12251	9374 E	50.2	51.5	136	48x1.5	42	37	30
12325	9255 E	23	25	88	23x1	18	16	13
12326		25	26.6	88	24x1 Cónico	20	17	14
12335	9282 E	33	35	118	33x1.5	26	23	18
12343	9319 E	40	43	130	38x1.5	32	28	23
12351	9372 E	48	51	158	48x1.5	42	36	29
12418	9251 E	17.5	18	70	16x0.75	14	11	9
12422	9265 E	20.5	22.8	98	20x0.75	16	14	11
12521	9260 E	21.6	21.6	86	19.68x24 (") Izq.	16	14	11
12531	9276 E	31	31.9	133	30.07x24 (") Izq.	25	22	18
12542	9318 E	41.5	42.84	118	40.46x24 (") Izq.	36	31	25
12552	9362 E	51.5	52.21	127	49.98x22 (") Izq.	44	38	31
12257	9368 E	57	56	160	54x1.5 Izq.	53	45	33