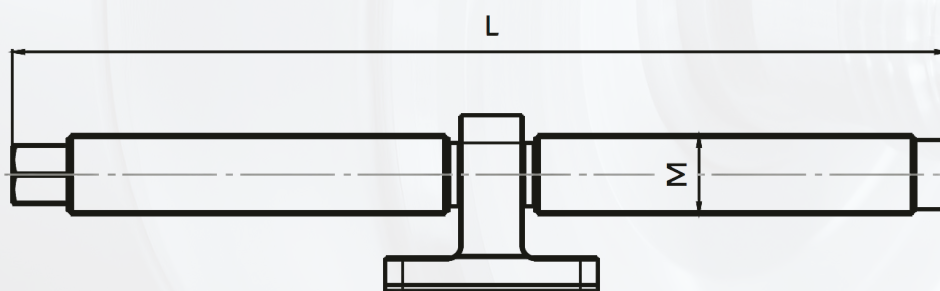
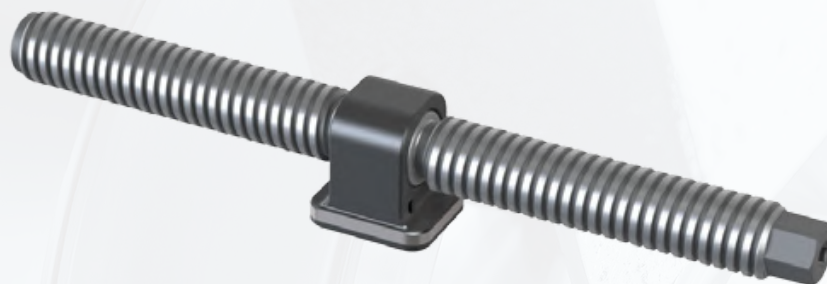




Tornillo



Nº Art.	L	M
SK48X78	82,5	M12X1,5
SK48X118	122,5	M12X1,5
SK48X155	163	M12X1,5
SK78X110	111	M14X1,5
SK78X145	146	M14X1,5
SK78X185	186	M14X1,5
SK126X180	190	M20X1,5
SK126X230	237	M20X1,5
SK126X280	287	M20X1,5